

**NEW**



**UNIQUELY CLEAN VIEW.**

## **Wöhler VIS 700 HD-Video Inspection System**

**Digital video inspection with individual focus control**

# Wöhler VIS 700 HD-Video Inspection System

## The new fully digital Wöhler camera generation

The Wöhler VIS 700 offers exactly what professionals have been waiting for: razor sharp high definition images, a focus function for precise inspection, and now wireless locating. The Wöhler VIS 700 is the ideal inspection camera for waste water pipes, flue gas and ventilation lines as well as NDT and plumbing applications.

### Fully digital camera system

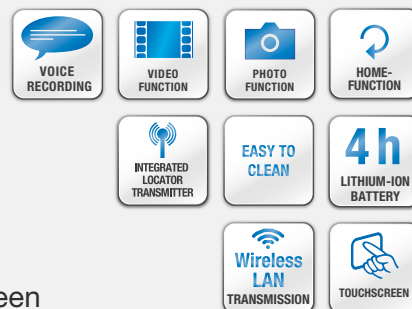
A new digital high-resolution sensor assures amazingly sharp images. With the Wöhler VIS 700, professionals are able to plan their maintenance services on the basis of clearly visible facts. The displayed level indication ensures you to keep orientation in the pipe. The camera display shows the camera head position and angle for ease of navigation. The home function allows you to realign the camera head straight forward when needed. HD images are displayed for you on the brilliant, touch screen high-resolution monitor. The Wöhler VIS 700 is designed to transmit live video data to smart devices via Wireless LAN. While conducting an inspection, you have the option to stream live images and videos on a smartphone or tablet. You can also save all footage to an SD card for reviewing at a later time.

### Focus using joystick and touchscreen

The focus function via touch screen or joystick makes it possible to precisely control the depth of focus. A simple tip on the joystick ensures a precise, crystal clear image on the screen. Additional settings and extras, such as the touch screen keyboard, are accessible by tapping the touchscreen monitor.

## ADVANTAGES

- High Definition image quality
- 1.5 inch detachable waterproof pan & tilt color camera head (IP 67)
- 7" HD color touchscreen with adjustable focus via joystick/touch screen
- Built-in radio transmitter facilitates wireless location detection
- Position and level display for orientation during inspections
- On screen keyboard for typing comments / descriptions to photos
- Transmission of live images/video via Wireless LAN







Sharp picture, clear menu and comfortable to hold.



Precisely locate with the Wöhler L 200 Locator (~9 kHz).



Secure drain inspection with the waterproof camera head.



Inspection of flue gas lines from 2 inches, easily negotiates tight bends of 87°.



Easy inspection of ventilation systems with the 100 foot camera rod.



The 100 foot camera rod is flexible and durable because of its construction.

# Overview of functions

## HD-Video Inspection

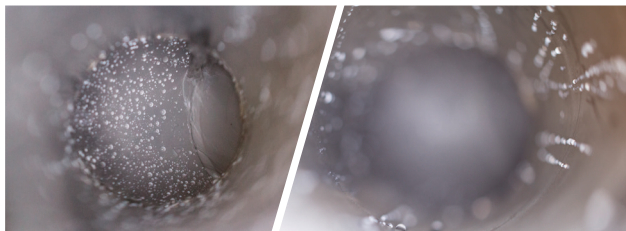
Digital pictures and a high resolution monitor provide an absolutely clear image.

## Flexible Operation

The monitor can be fixed to the case in two different positions. The screen can be operated by touch or by joystick. The monitor is tiltable and removable.

## Individual Control of Sharpness

The motor driven focus can be adjusted by touchscreen or joystick.



far range

close range

## Comments & Voice Notes

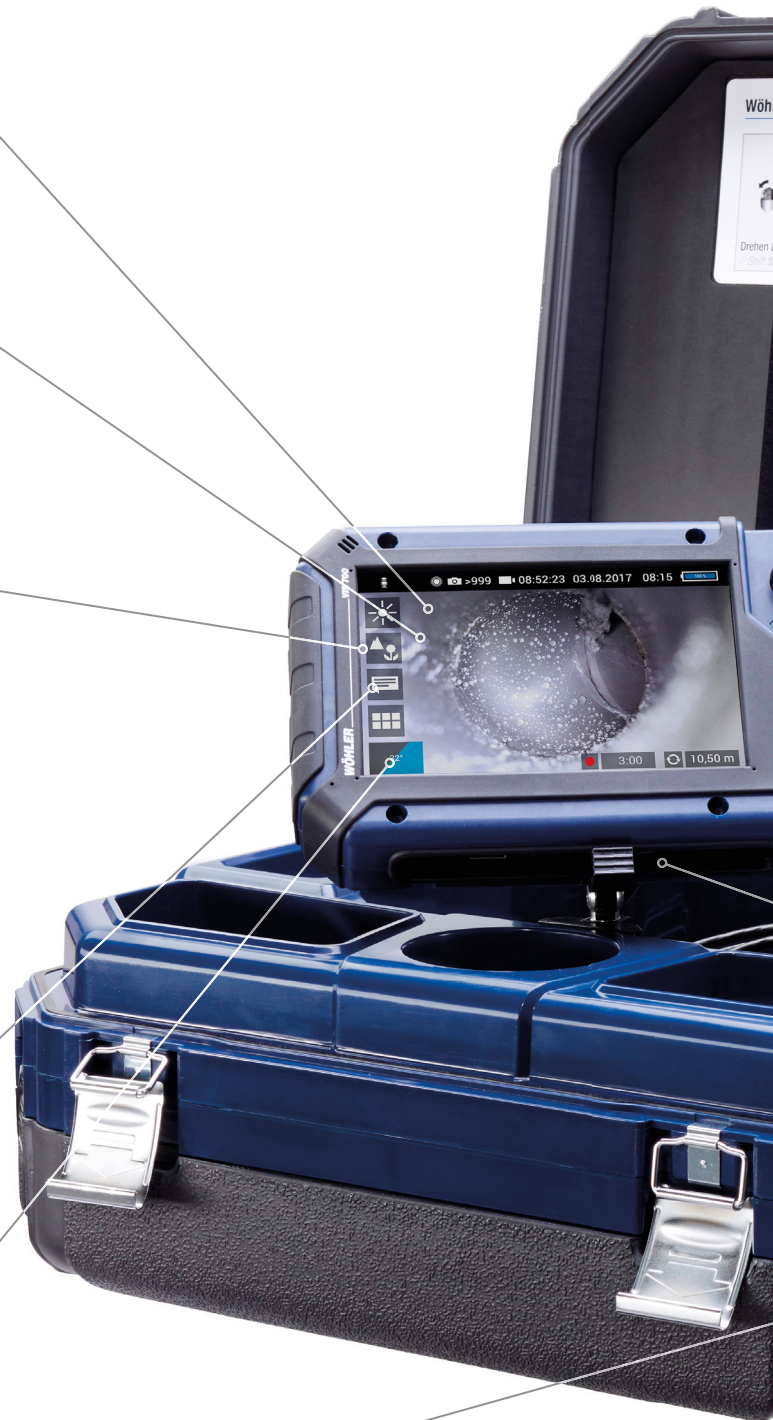
A comments function allows you to add descriptions to captured photos. It is also possible to add voice notes to video footage.

## Position and angle display

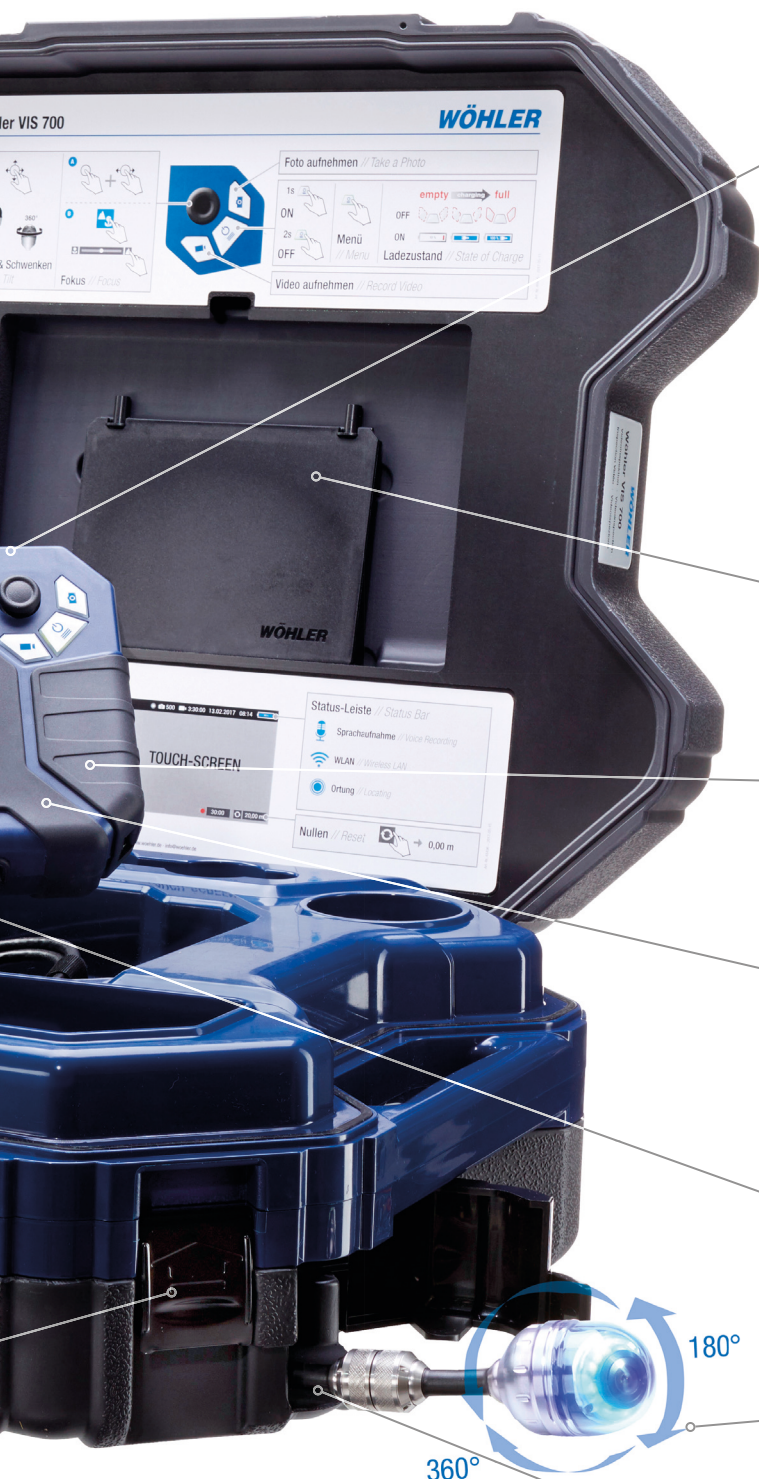
Ensures the user knows where top and bottom are in the pipe at all times. The length of unwound cable is sensed electronically and displayed for pinpoint positioning.

## Easy to clean and a lot of space for accessories

The case is easy to clean thanks to the easily removable top shell. Moreover, the twinwall hard case also protects the camera head and the monitor.







### Hand-held

Adjustable to individual requirements, reliable grip when operating the monitor.



### Anti-glare protection

The anti-glare protection is stored in the case. If necessary- it can be fixed to the monitor.

### Transmission of live images by Wireless LAN

To transmit the video signal to an external monitor or your smartphone/tablet.

### Powerful Li-ion battery

With a respective operating battery life of 4 hours – high speed charging via the latest USB standard (USB-C connection).

### USB stick & SD card slot

Save your pictures and videos directly to the SD card or an USB stick.

### 1.5 inch pan & tilt camera head

Tilts 180° from left to right and pans through 360°. Precisely adjustable depth of focus. IP 67.

### Durable Camera Rod

The 100 foot camera rod is flexible and durable because of its construction.

## Application

Analyze damage and inspect:

- House connection pipes up to 8"
- NDT applications
- Flue gas systems of 2.5" and larger
- Ventilation system ductwork
- False ceilings, hollow spaces, shafts
- Industrial machines/plant
- Waste water lines of 2.5" and larger



## Functionality

- HD touchscreen – razor sharp recordings from any perspective
- Adjustable depth of focus
- Optics pan 360° and tilt 180°- even the smallest amount of damage is viewable
- Camera head with integrated variable frequency transmitter
- Electronically determined position and angle of the camera head shown on the display
- Brightly illuminating color camera head, 1.5" in diameter and 2.5" in length, easily negotiates tight bends
- Electronic distance counter displays position on monitor
- Bright TFT color monitor for razor-sharp images
- Battery operating time of 4 hours with a rechargeable Li-ion battery
- Fully equipped mobile solution in a rugged twinwall hard case
- Comments features touch screen keyboard for typed notes
- Voice notes
- Fast and effective cleaning of the camera rod



## Data management

- Simply record and store photos and videos on the 32 GB SD card for documentation and archiving purposes for you and your customers
- Wireless LAN interface



## Location detection with Wöhler L 200 Locator (optional)

- Transmitter integrated in camera head makes it possible to precisely locate the camera head
- Pinpoint damage repairs to pipelines
- Telescopic holder makes it easy to locate damage under floors or in ceilings
- Chalk holder with lithographic chalk to mark located damage immediately
- Long-lasting rechargeable Li-ion battery

## TECHNICAL DATA

### Monitor

Dimensions housing.....	10 x 6 x 2 in
TFT display .....	7" / 16:9 format
	1280 x 800 px
Weight.....	2 lbs.
Power supply.....	USB C 5 V / 3 A
Power supply.....	3.7 V, 11.4 Ah rechargeable Li-Ion battery
Battery operating time .....	4 h (battery status in display)
Operating temperature.....	32...104 °F
Storage temperature.....	-4...122 °F

### Wöhler pan & tilt camera head 1.5 inch

Type.....	1/2.7" Color CMOS
IP rating .....	IP 67
Viewing angle, diagonal.....	160°
Focus distance.....	1 inch...∞
Light source .....	10 white LEDs
Protection .....	Waterproof to IP 67 (up to 40 ft. depth for 30 mins.)
Dimensions.....	1.5 x 2.5 inches
Transmit frequency of Locator .....	variable

### Camera rod

Length.....	100 ft.
Diameter .....	.33" x .22"

### Electronic meter counter

Resolution.....	1 inch
Max. deviation.....	5% of reading

### Memory

Max. capacity of SD card.....	32 GB
Technology .....	SD or SDHC, speed class 10
Recording capacity .....	Approx. 3 GB/h
Resolution recording .....	1280 x 720 HD, max. 25 fps
Recording format .....	AVI (H264)

### Double-walled plastic case

Dimensions.....	7 x 18 x 20 inches
Total weight incl. monitor, camera head and push rod .....	22 lbs.

### Locator receiver

Display .....	Graphic camera position indicator
Output impedance, headphones.....	Typ. 32 Ohm
Frequency.....	~9 kHz
Power supply.....	3.7 V rechargeable Li-Ion battery
Operating temperature.....	0...104 degrees F
Storage temperature.....	14 °F...104 °F
Weight.....	1.5 lbs.
Dimensions.....	12 x 6 x 3 inches

# Wöhler VIS 700 HD-Video Inspection System

Inspection of waste water pipes, flue gas and ventilation lines



## Basic set (ready to use)

### Wöhler VIS 700 HD-Video Inspection System

- Wöhler VIS 700 Monitor with HD TFT monitor 7" incl. 5 ft. cable and Li ION battery
- Wöhler pan and tilt color camera head 1.5 inch, detachable
- SD memory card 32 GB
- Camera rod 0.33 x 0.22 inch, 100 ft. long (removable for cleaning)
- 5 replacement plastic domes
- 1 anti slide mat
- USB-charger with USB-C-cable
- Plastic case

Article no.	7082
-------------	------

## Select accessory set

Select suitable accessory sets for our basic sets



Guidance Set 100  
for camera head 1.5 inch



Wöhler L 200 Locator (~9 kHz)  
for camera head 1.5 inch

Scope of delivery		
Wöhler L 200 Locator, 8.9 kHz		•
Roller Guide	•	
Protection Sleeve	•	
Centering star	•	
Article no.	4240	7430



**USA Borescopes**

2061 Bearden Road | Clarksville, TN 37043

931-362-3304 | [sales@USABorescopes.com](mailto:sales@USABorescopes.com) | [www.USABorescopes.com](http://www.USABorescopes.com)